

ENVIFLOW V 2.0

Air Sampler unit for sampling the gas phase
air pollutants from ambient air



Application field:

Sampling of ambient air by adsorption on impregnated glass sinter filter or active carbon tube/absorption in impinger filled with absorptive liquid.

Construction:

Easily portable casing, fully PLC controlled sampling cycles, MFC controlled volume flow 8 channel sampling with inlet filter (PTFE housing and filter).

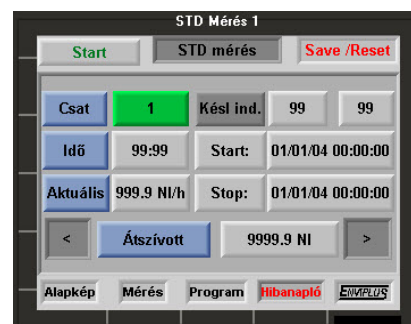
The sampling vessels (glass filter/impinger) arranged in one row, one beside the other.

Separate solenoid valve on each sampling channel to avoid the possibility of cross leakage from an inactive channel.

Materials in contact with the sample gas are inert materials, such as PTFE pump membrane, PTFE solenoid valve membranes, PTFE tubes.

Inlet connection: 6 mm compressed fitting.

Easily portable casing with wheels and 2 handles.



Enviplus Kft. 1116 Budapest, Fehérvári út 168-178 Hungary
Tel.: +36 1 287 2971 www.enviplus.hu

Controller functions:

- Preinstalled (ROM), real-time clock based
- controller software.
- The software has includes the possibility for saving the sampling data (Start / End time, Preconfigured volume flow, Sampled volume, etc.) and control parameters onto SD memory card. Excel compatibility.
- The controlled program has 2 level password protection against unauthorized operation.

2 Different program types:

Standard imission program

Sampling with freely programmable starting and stopping time every day with daily channel change (based on real time clock). Common programmable volume flow for all channels. Delayed sampling start function.

At the absorption/adsorption material replacement the program keeps the sampling data of the active sampling channel, and continues the sampling without any restarting or reconfiguration.

After stopping and restarting of the program the controller continues the sampling according to the real time clock. If the previous seven sample was not replaced and new sampling was not started than the sampling will stop after the ending of the last (8.) sampling.

Emission/Short time sampling program

Sampling cycles with freely programmable parameters per channel (volume flow, sampling time 1 – 9999 minutes, delayed sampling start).

All programmable parameters are separate for each sampling channel.

Other parameters:

The volume flow of the sample is measured and controlled by MFC technology. The measured volume flow is corrected to 20°C reference temperature as standard (this reference temp is freely adjustable).

The accuracy of the volume flow control is +-2% of full scale.

Adjustable volume flow: 0,2 – 1,5 l/min

Power supply: 230V AC

Power consumption: Max. 50W

Option: External accumulator power supply operation.

Weight: 15 kg

Operating conditions:

Pressure: Atmospheric

Relative humidity: 15-80%

Ambient temp.: -10 - +40 °C

Your distributor: